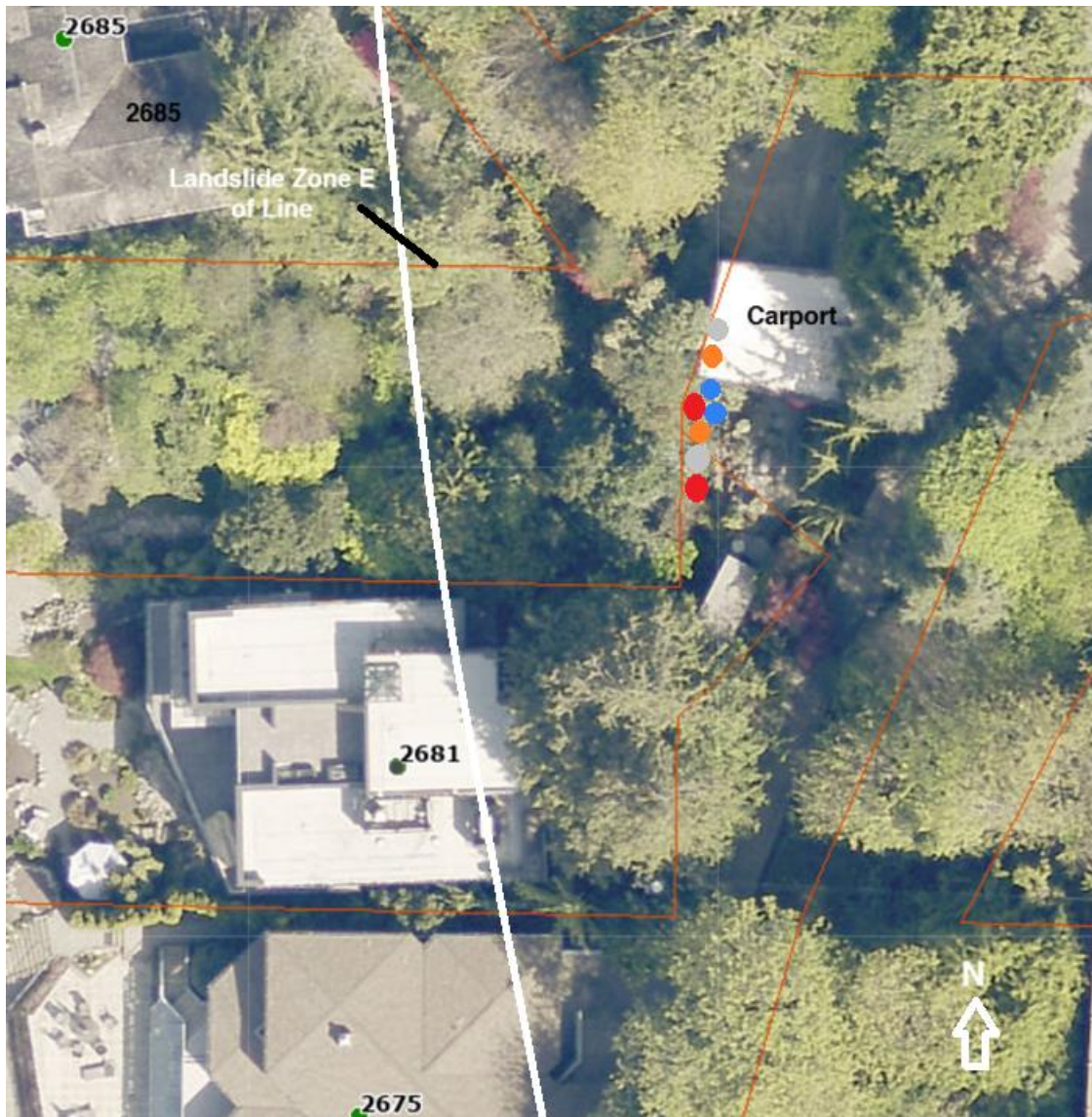


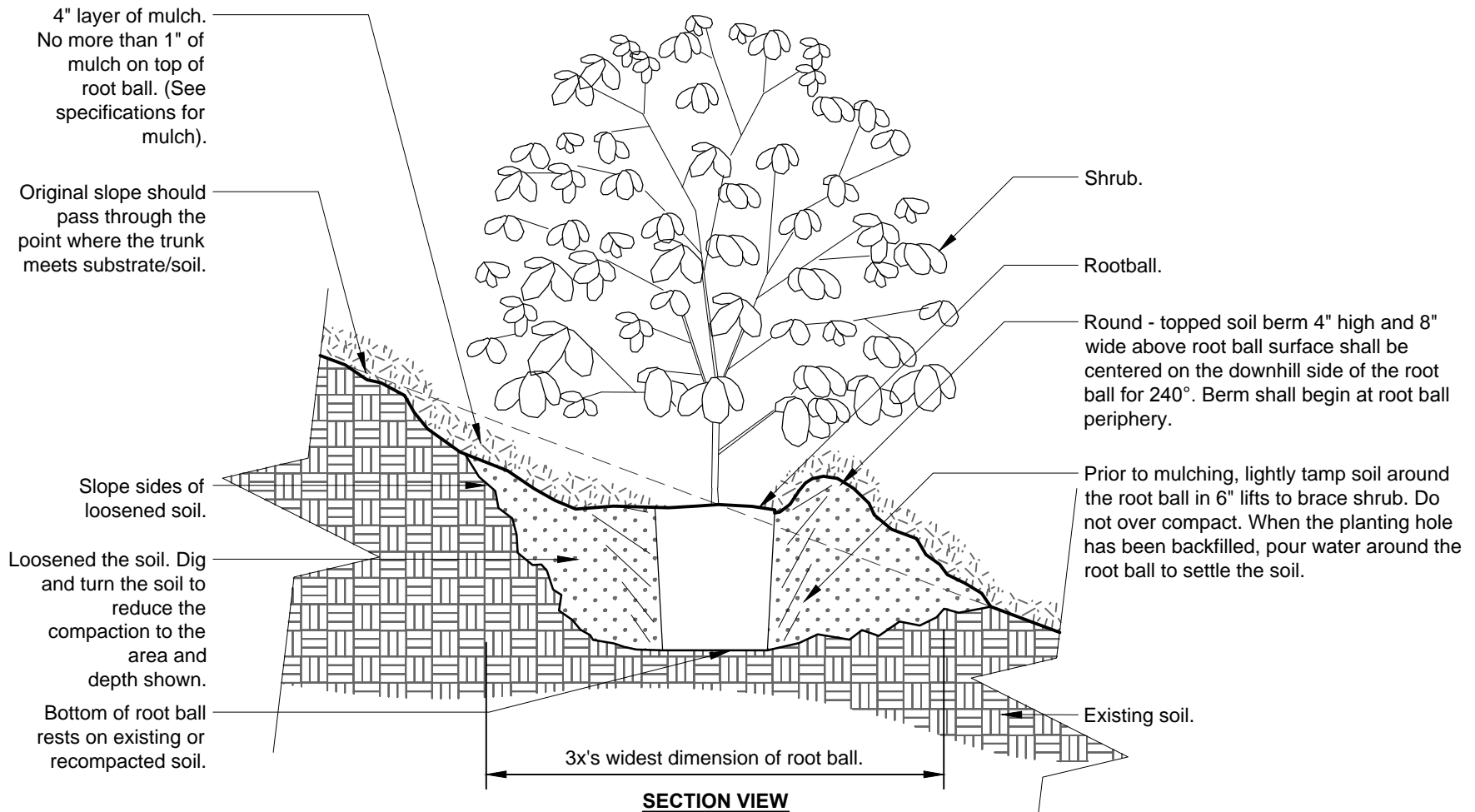
**Planting Plan: 2681 SW 151<sup>st</sup> PI (revised 2/14/25)**

Proposed is the locations of the new trees and bushes to be planted. The trees and shrubs being planted will be in a difficult area with many rocks and a lack of planting space. Because of this we propose the trees and shrubs be in 1- and 2-gallon pots. 2 bushes will be planted to the W of the carport and the 6 remaining plants will be S of the carport. Refer to table and map for species of trees and bushes and planting locations.



Symbol	Quantity	Common Name	Genus Species	Size
Red	2	Oregon Grape	Berberis aquifolium	1 gallon
Grey	2	Evergreen Huckleberry	Vaccinium ovatum	1 gallon

Orange	2	Snowberry	Symphoricarpos	1 gallon
Blue	2	Vine Maple	Acer circinatum	2 gallon



Notes:

- 1- Shrubs shall be of quality as prescribed in the root observations detail and specification.
- 2- See specifications for further requirements related to this detail.

URBAN TREE FOUNDATION © 2014  
OPEN SOURCE FREE TO USE



**SHRUB ON SLOPE 5% (20:1) TO 50% (2:1) - UNMODIFIED SOIL**